

Data Sheet

HV03-12 adopts high reliable mesa structure and diffusion craft, epoxy resin molded in a compact structure.

■ Features:

- Avalanche characteristic
- A variety of dimensions
- Epoxy resin vacuum packaging, anti-corrosion in the surface
- Tj:-40℃—+150℃

■ Applications:

- High frequency high voltage power rectifier
- Voltage doubling circuit
- High voltage power supply
- High voltage testing equipment

■ Maximum Ratings:

Item	Symbol	Unit	Conditions	Voltage
Repetitive Peak Reverse Voltage	V_{RRM}	KV	Ta=25℃ I _R =0.02μA	12.0
Peak Working Reverse Voltage	V_{RWM}	KV	Ta=25℃ I _R =0.02μA	12.0
Average Forward Current	I _{F(AV)}	mA	50Hz Half-sine Wave , Resistance load @T _{break} =50℃	350
Surge Forward Current	I _{FSM}	A	0.01S @ Half-Sine wave 50Hz	30
Operating Ambient Temperature	T _a	℃		-40~+150
Storage Temperature	T _{stg}	℃		-40~+125

■ Electrical Characteristics (Ta=25℃ Ta=25℃ Special conditions aren't be included)

Forward Peak Voltage	V_{FM}	V	@ Ta=25℃ I _F =0.35A	13.5
Peak Reverse Current	I _{RRM1}	μA	@ Ta=25℃ V _{RM} =V _{RRM}	2.0max
	I _{RRM2}	μA	@ Ta=100℃ V _{RM} =V _{RRM}	10max

■ Dimensions(mm)

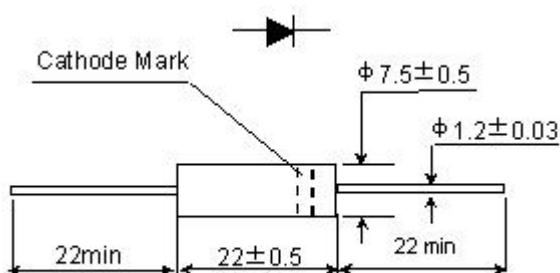
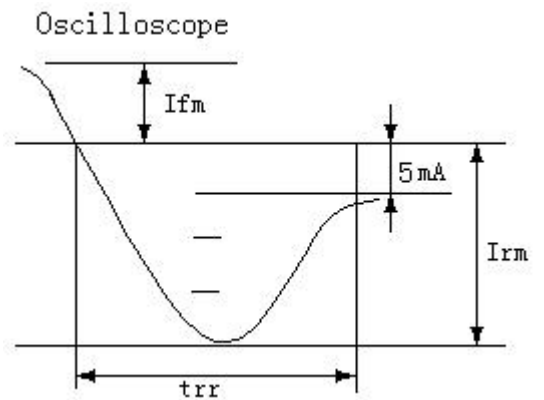
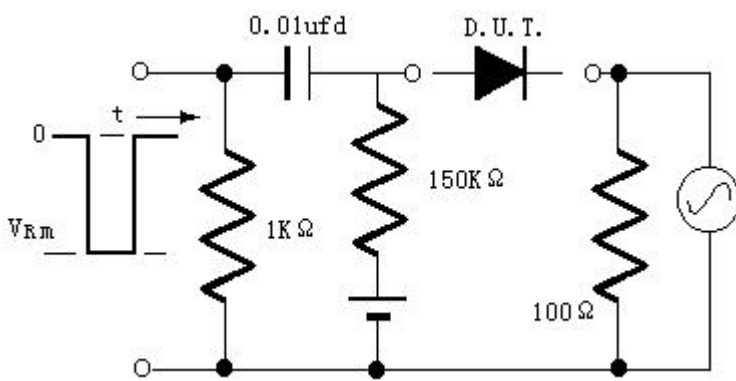
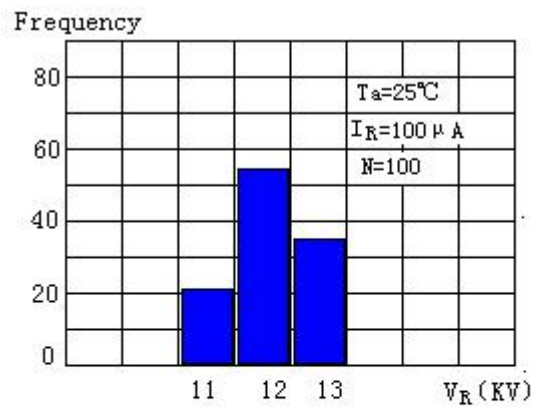
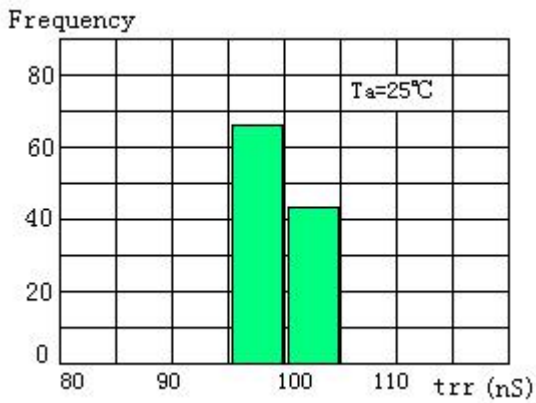
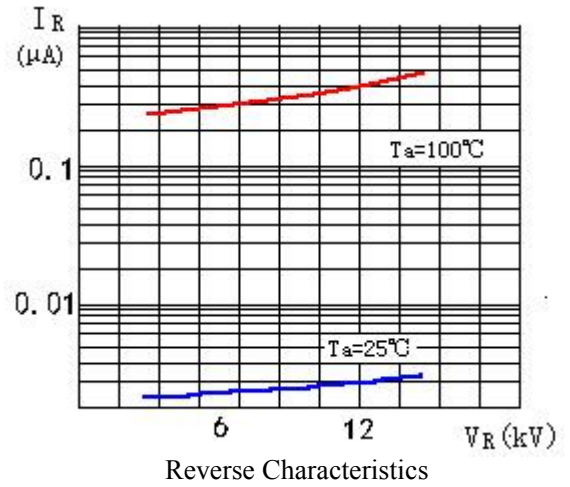
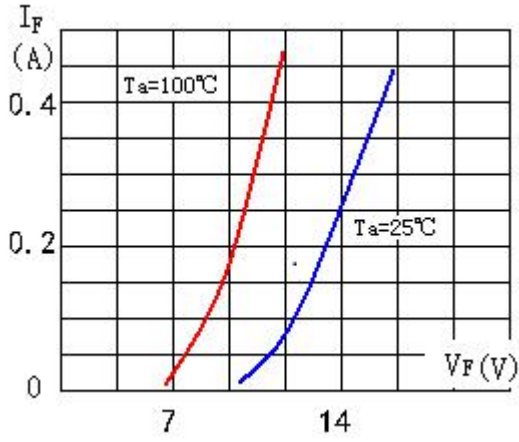


Fig.1

■ Characteristic Curve



Reverse Recovery Time Basic Test Circuit